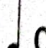
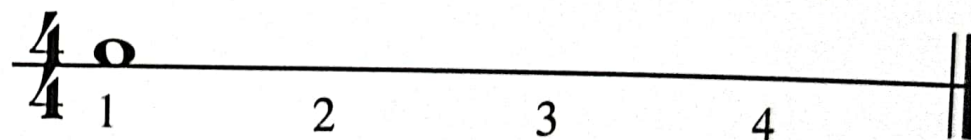


# Time Signatures and Note Values

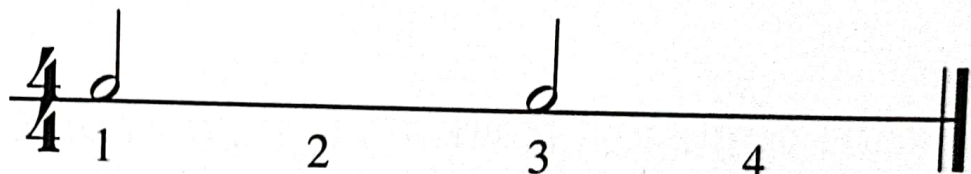
Time Signatures are placed at the beginning of a piece of music. They contain two numbers that show the number of beats (or counts) in each measure and the kind of note that receives one beat.

$\frac{4}{4}$  = 4 beats to a measure  
 $\frac{4}{4}$  = quarter note  gets 1 beat

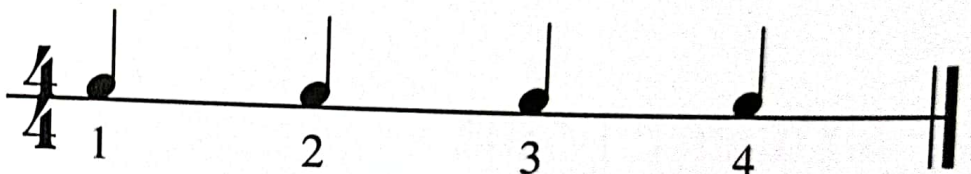
In  $\frac{4}{4}$  time, a whole note receives four beats.



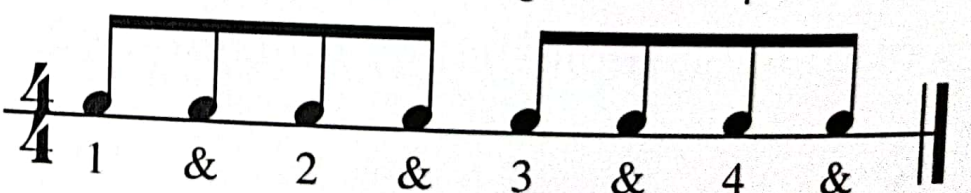
A half note receives two beats.



A quarter note receives one beat.



An eighth note receives half of a beat.



A sixteenth note receives  $\frac{1}{4}$  of a beat.

